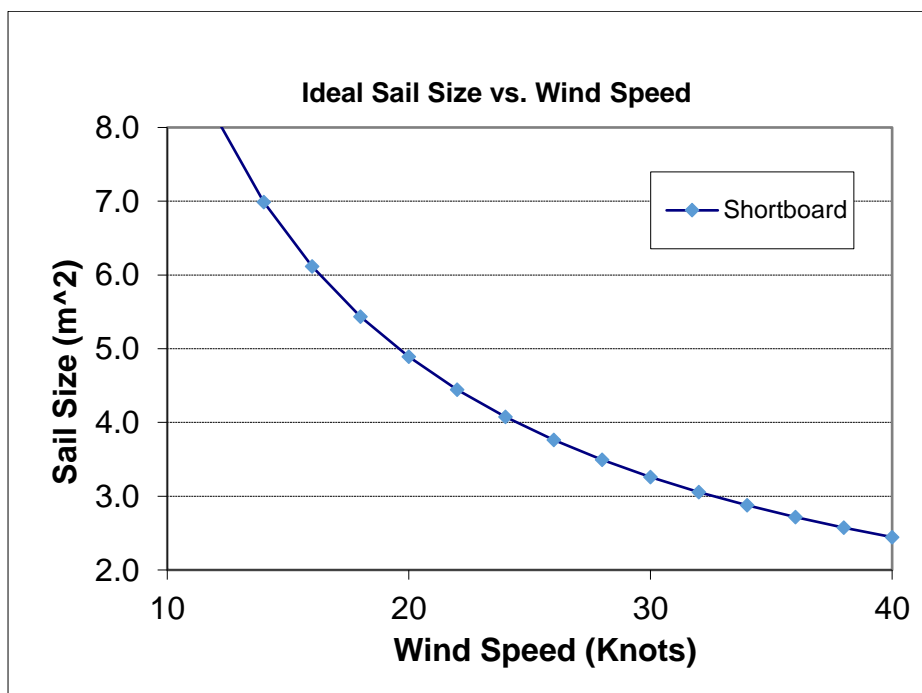


WINDSURFING NORTH – EAST ROCKS! – C. Petkov

Credit goes to: Northumberland Winsurfing Location Guide: <http://www.northumbrianwindsurfing.com/location-guide/>

SPOT	Notes	Offshore	Onshore	Cross	N	NNE	NE	ENE	E	ESE	SE	SSE	S	SSW	SW	WSW	W	WNNW	NW	NNW
Budle Bay	2 hr before after Htide, NO: Nov - March	SE	NW	NE/SW	C-On	Cross	Cross			Off	Off	Off			Cross	Cross	C-On	On	On	On
MOB	Best: W with N swell, diff acces w/Htide	SSW	NNE	W							Off	Off	Off	Off			Cross			
Bamburgh	Most tides, waves on N tides	SW	NE	SE/W						Cross			Off	Off	Off			Cross		
Beadnell	reef exposed on low tide	W	E	N/S		Cross								Cross			Off	Off	Off	
Embleton	only on cross	SW	NE	SE/NW							Cross			Off	Off	Off				Cross
Boulmer	reefs under in Htide; picks up more wind SE	W	E	N/S	Cross				On				Cross			Off	Off	Off	Off	
Seaton Point	NE is good cross, wind shadow because high	NW	SE	NE/SW			Cross								Cross			Off	Off	Off
Alnmouth	SW good with S swell; gusty high ground	NW	SE	SW									C-On		Cross		C-Off	Off	Off	Off
Amble	best low to mid tides; high tides rip currents	SW	NE	SE/NW						Cross				Off	Off	Off				Cross
Dbay N	best low to mid tides	WNW	ESE	SSW										Cross			Off	Off	Off	
Dbay Boat	most tides ok	NW	SE	NNE/SW		Cross									Cross	C-Off		Off	Off	Off
Dbay S	High dunes, less popular	WNW	ESE	N/S		Cross								Cross			Off	Off	Off	
Cresswell	S end Dbay	SW	NE	SE/NW					C-On		Cross			Off	Off	Off	C-Off			Cross
Blyth	Wind shadow, gustier here	NW	SE	SW	Cross								Cross			Off	Off	Off		C-Off
Seaton Sluice	kit carry through dunes, strong current, better places	SW	NE	SE/NW	Cross							Cross		Off	Off	Off				Cross
South Shields																				
Redcar																				
Ladyburn Lake	Car Park	S	N	W/E					Cross				Off	Off	Off			Cross		
Ladyburn Lake	Sail Club	SE	NW	NE/SW			Cross			Off	Off	Off			Cross					
Ashington Lake	Small lake, W/E best	N	S	W/E	Off	Off			Cross								Cross			Off
Derwent	W to E winds	N	S	W/E	Off	Off			Cross								Cross			Off
Kielder	Sail Club, otherwise Leaplish (N/S)	S	N	W/E					Cross				Off	Off	Off			Cross		

Credit to James Douglass for his windsurfing calculator (<http://jimbodouglass.blogspot.com/2010/11/updated-windsurf-calculator-online.html>) * shown here for shortboard with a 72kg sailor; with plots for however you measure wind speed.



0	1	2	3	4	5	6	7	8	9	10	11	Beaufort
0	1	4	7	11	17	22	28	34	41	48	56	KT

Board Desired	Volume (Liters)	Width (cm)	Length (cm)	Daggerboard?
First Shortboard	124	75	255	No
Minimum Size Uphaulable	102	60	240	No
Moderate Sinker	84	58	237	No
Serious Sinker	74	55	234	No
Radical Sinker	64	52	230	No

Sail Size (m²): 5.5

Fin Type or Board Type	Fin Depth (cm)	Comments	Fin area (cm²)
Freeride / Slalom	30		275
Wave	25		

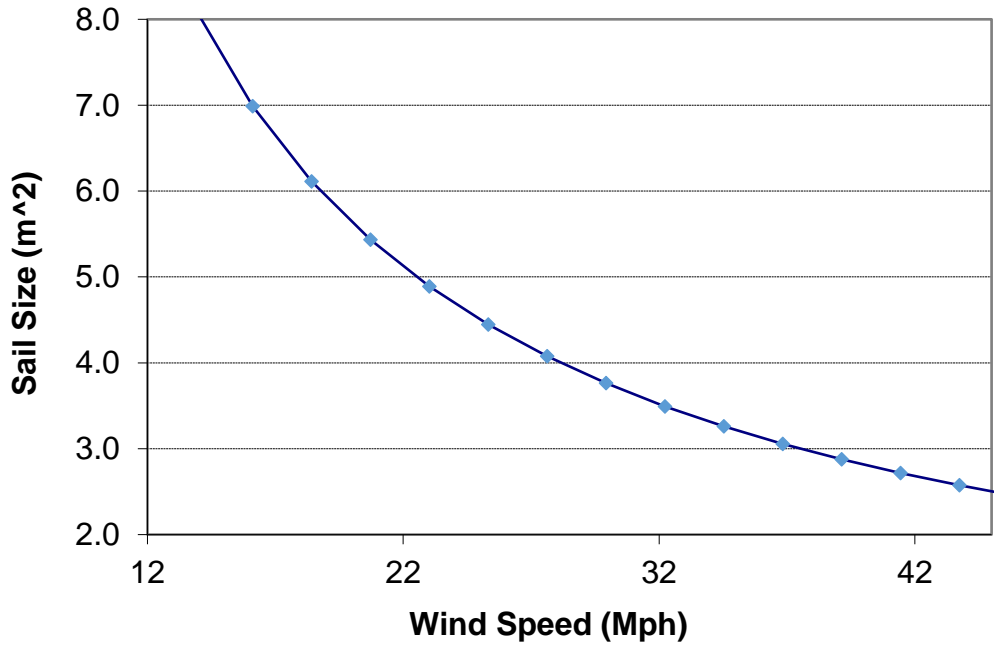
Sail Size (m²): 4.5

Fin Type or Board Type	Fin Depth (cm)	Comments	Fin area (cm²)
Freeride / Slalom	25		225
Wave	22		

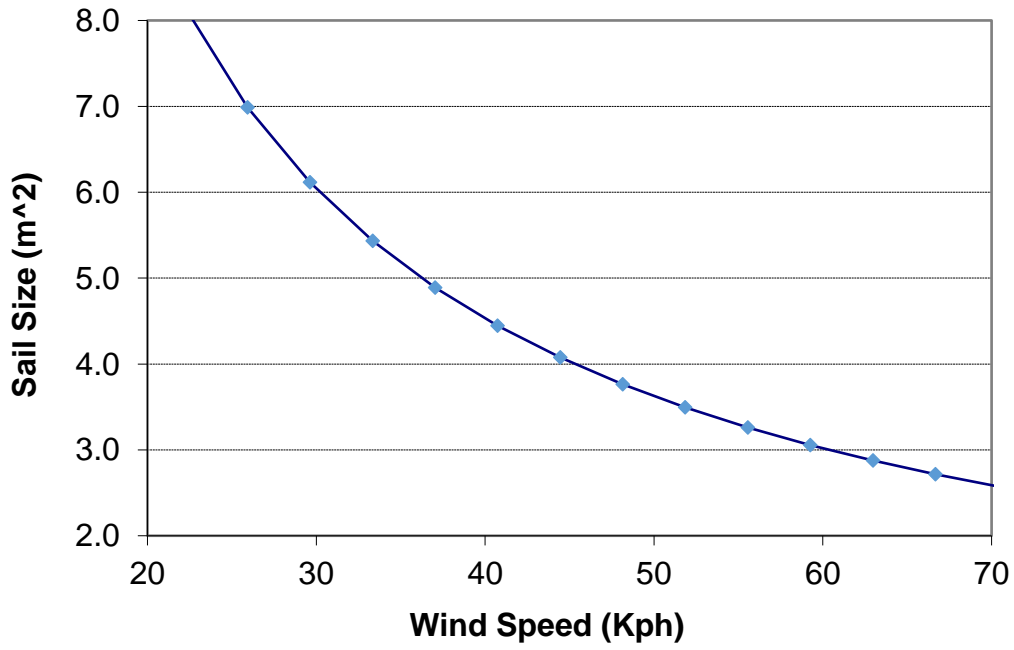
Sail Size (m²): 3.5

Fin Type or Board Type	Fin Depth (cm)	Comments	Fin area (cm²)
Freeride / Slalom	20		175
Wave	19		

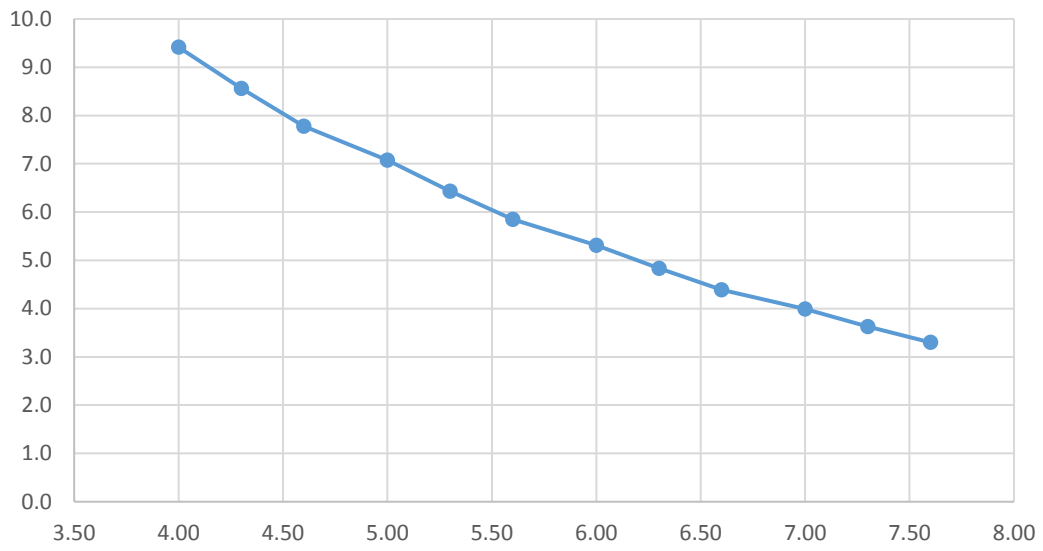
Ideal Sail Size vs. Wind Speed



Ideal Sail Size vs. Wind Speed



Ideal Sail Size Beaufort



SCREEN SHOT OF SPOTS IN NORTH EAST – From Northumberland Windsurfing Location Guide
[\(http://www.northumbrianwindsurfing.com/location-guide/\)](http://www.northumbrianwindsurfing.com/location-guide/)



Budle Bay ▼



Description

A lagoon just round the corner from Bamburgh beach. It is a tidal lagoon that fills up 2 hours before high tide and empties 2 hours after high tide. Relatively shallow in spots. No waves get into the lagoon so there is only wind chop to handle. Really beautiful spot.

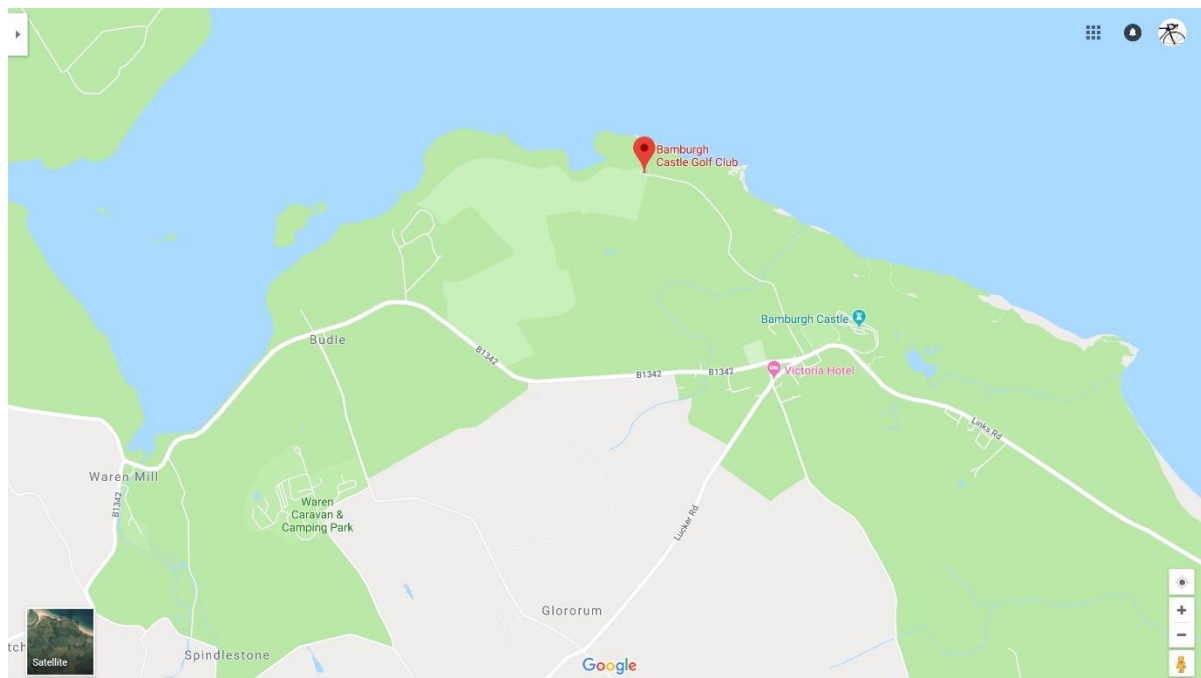
There is no water in the bay at low tide. Sailable 2 hours before and after high tide. High Spring tides are the best, more sailing area and depth of water good for a few hours; neap tides do not fill the bay.

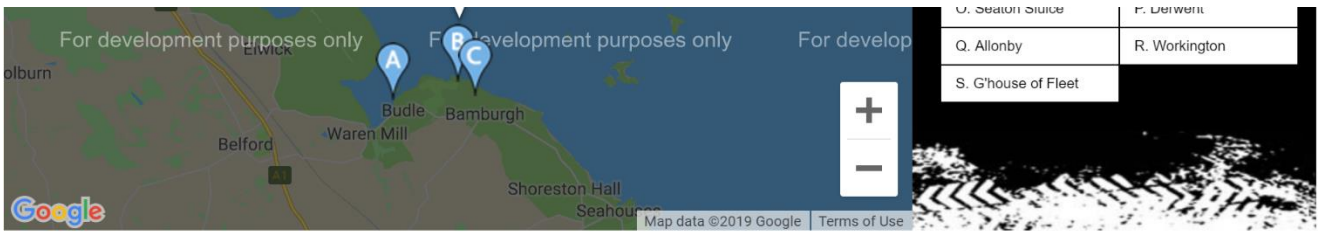
Currents on the incoming and outgoing tides can be strong as the bay is getting shallower, danger on the outgoing tide as the current will take you out of the bay.

Budle Bay is closed to Sailing from November 1st to the end of March due to the site being on a migratory route for many species of birds. Please adhere to this rule. Access to the bay is very good from the middle of the south side lane.

Best Wind Directions

EASY MODERATE HARD





- Budle Bay >
- Mouth of Budle >



Description

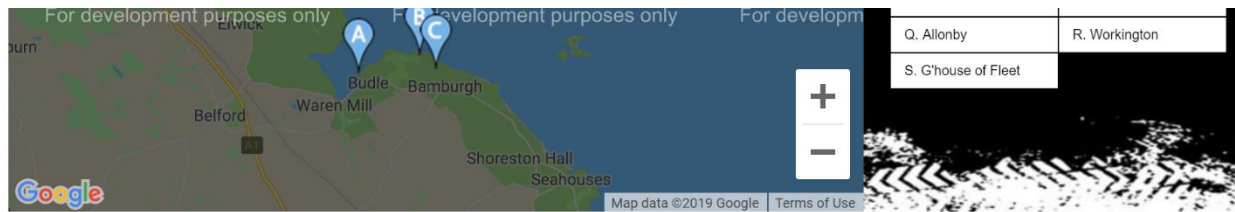
The beach just to the south of Budle Bay, just north of Bamburgh beach. Benefits from having more wind than Budle Bay or Beadnell on a westerly direction due to the high ground (70m hill) funnelling effect beside it, and flattish land just upwind.

Can be short board sailing when nowhere else on the coast works, works best on westerly directions, (cross off). A clean wind for a westerly, coupled with a northerly swell gives some of the finest classy cross off clean wave sailing on the Northumberland coast. A bit of a carry with the carefully selected kit, requires a good level of fitness and strength, and sailing ability/experience. Limited parking.

Can be sailed at most tides, on a spring high tide the beach will disappear with the tide right up against the rocks and dunes. Sailing is still possible but access becomes more difficult. Rock outcrops at points, but flat sandy beach off high tide. Waves and flat water.

Best Wind Directions

EASY MODERATE HARD



- Budle Bay >
- Mouth of Budle >
- Bamburgh >



Description

A big long sandy beach with the Bamburgh castle as a backdrop. Open to huge northerly swells, sailable at most tide states but no beach on a spring high tide. Can get some nice waves and quite sizeable, cross shore best directions. Access is good from Bamburgh north end. South end is possible, but a long carry ensues.

Best Wind Directions

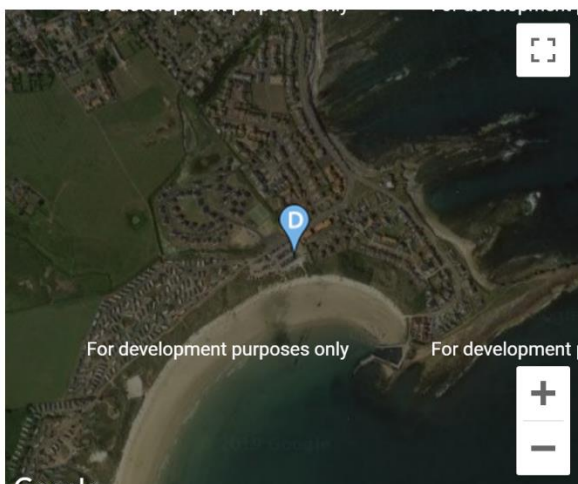
EASY MODERATE HARD



Back to top



- Budle Bay ➤
- Mouth of Budle ➤
- Bamburgh ➤
- Beadnell ▼



Description

A big wide east facing horse shoe shaped bay with a few rocky reefs (exposed at low tide and covered from mid tide).

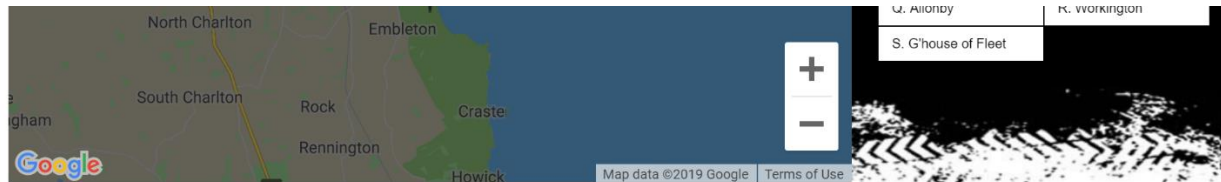
Can be sailed at most tide times and wind directions, popular for flat water blasting, and gets some nice waves, huge in the middle of the bay off the main reef, suffers with gusty wind on offshore directions due to the high dunes. Access is good from the north end or south end car park.

Best Wind Directions

EASY MODERATE HARD



[Back to top](#)



- Budle Bay ➤
- Mouth of Budle ➤
- Bamburgh ➤
- Beadnell ➤
- Embleton ▼



Description

A small nice sandy horse shoe shaped bay, gets some nicely spaced clean waves. Cross shore on a NW and SE access ok but a long carry ensues.

Best Wind Directions

EASY MODERATE HARD



[Back to top](#)

Boulmer



Description

A natural safe haven formed by two outer reefs create flat water blasting at times in the bay and waves breaking on the outer reefs (sailable from mid to high,) can be good if only a small wave, but in huge S-SE-E-NE-N swells can provide a place to sail.

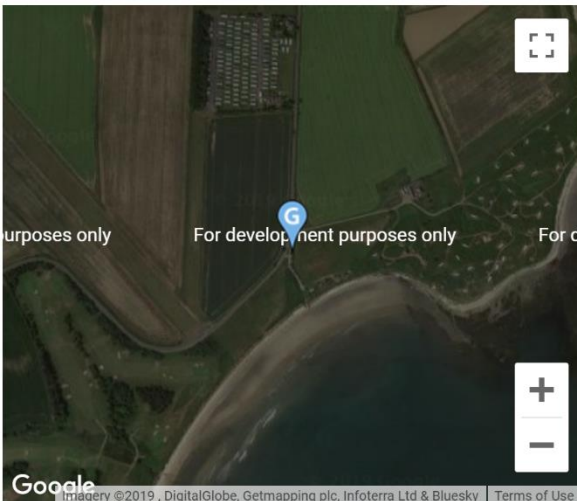
Versatile little spot, no water and dry reefs at low spring tides, neap tides sailing possible in the bay on flat water (reef still dry) but possible to sail through the gap in the reefs to the open sea. From mid tide there is plenty water to sail the bay and towards high tides there is enough depth of water to sail over/on the reefs, cross off to cross on the reefs. Rocks/sand in the bay/reefs, weed can be problematic but can be very good. Sits out on a point so it sometimes catches wind when nowhere else does. SE picks up more wind here than most places. Waves and flat water.

Best Wind Directions

EASY MODERATE HARD



Seaton Point



Description

A small bay with quite high ground around it, flat sandy beach with rocks at low tide, rocky outcrops at either end of the bay. On a NE at mid tide there are clean easy rideable waves wrapping into the bay cross shore, suffers a bit wind shadow but very good quality sailing. Not sailed much on other directions as there are better places.

Best Wind Directions

EASY MODERATE HARD



[Back to top](#)

Alnmouth



Description

A nicely situated flat sandy beach running SW to NE, with a tidal estuary (no sailing in the estuary, only on the beach). Access very good with the car park on the beach.

Sailable at all tide states, can be very good on a SW if a Southerly swell present, waves focus into the corner of the bay and wrap upwind slightly into the estuary mouth and can give very good wave riding along the length of the bay or flat water blasting, suffers from gusty wind due to high ground inland, funnelling effect from the estuary, local amenities very good, nice spot. Good waves and flat water.

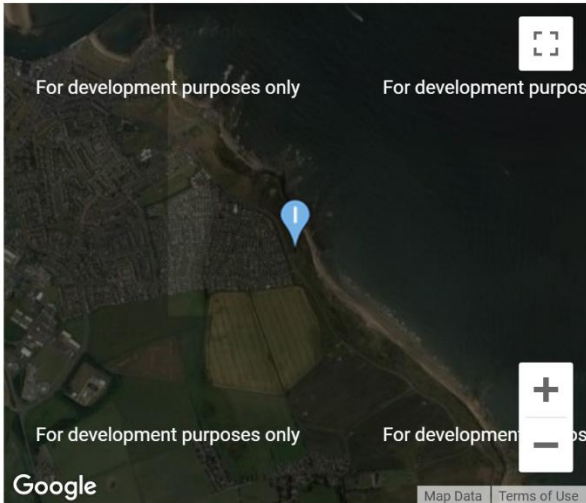
Best Wind Directions

EASY MODERATE HARD



[Back to top](#)

Amble



Description

A nice sandy beach with a few rocks and outcrops, with an island about a mile offshore with reefs extending to it at either end of the bay. Best times to sail are at Neap low tides to mid tide, low spring tides shallow out.

This will give either flat water blasting or cross on wave sailing on a NW or a SE. access ok, parking good but carrying the kit not easy, sailing can be good. High tides flood over the reefs and can cause big rips. Good waves and flat water.

Best Wind Directions

EASY MODERATE HARD



[Back to top](#)

Druridge North End



Description

A wide sandy horse shoe shaped bay with reefs at either end. The north end has good access, reefs to the north and south with flat sand in-between. Very good at low to mid tide with waves being wrapped off the reefs. Good wave sailing and flat water blasting on S-SW. Good limited parking right on the beach. Flat lands around point.

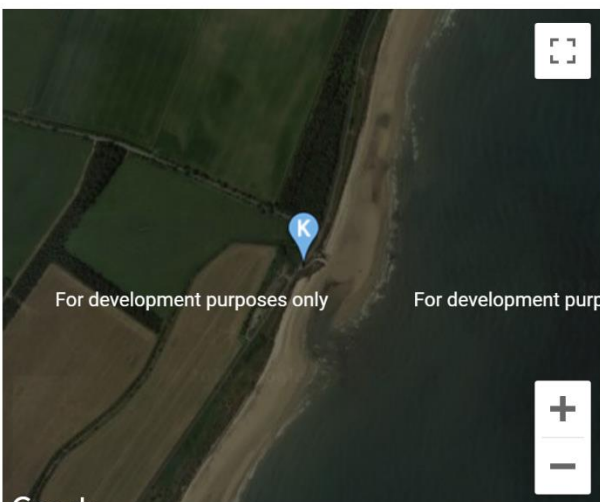
Best Wind Directions

EASY MODERATE HARD



[Back to top](#)

Druridge Bay Boatramp



Description

Easy access and limited parking, reef offshore sailable over at high tide and exposed from low to mid, creates a good waves on the flat sandy beach.

Sailable at most tide states, nice waves at times. Best on NNW-NNE or S-SW waves and flat water.

Best Wind Directions

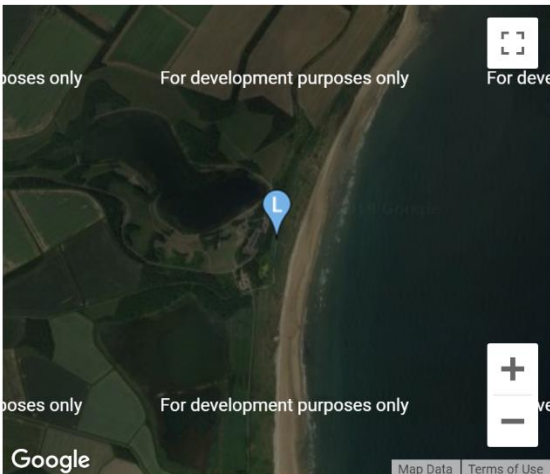
EASY MODERATE HARD



[Back to top](#)



Druridge Boardwalk ▼



Description

Mid-point of the bay, can get the biggest waves and strongest currents. Best at low to mid, high tide suffers a big wind shadow/gusty winds as the dunes are quite high here. Less popular. Sea defences at high tide can damage kit. Waves and flat water.

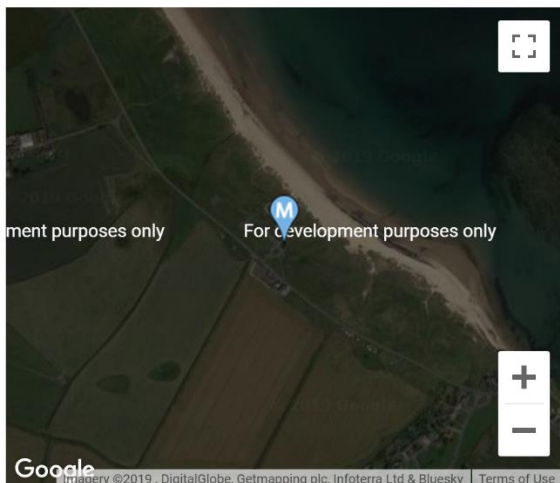
Best Wind Directions

EASY MODERATE HARD



[Back to top](#)

Cresswell ▼



Description

A flat sandy bay (south end of Druridge Bay) to the north and rough rocky reefs to the south, at low to mid the reefs are exposed, on a SE they can create some nice wrapped cross shore waves, good wave riding can be found, as well as flat water blasting.

Sailing also possible on a NW waves can be a bit more onshore but a WNW gives a bit of cross off. mid to high. can be sailed at most tide states, the offshore reefs sometimes give some nice waves that could be rideable.

Best Wind Directions

EASY MODERATE HARD

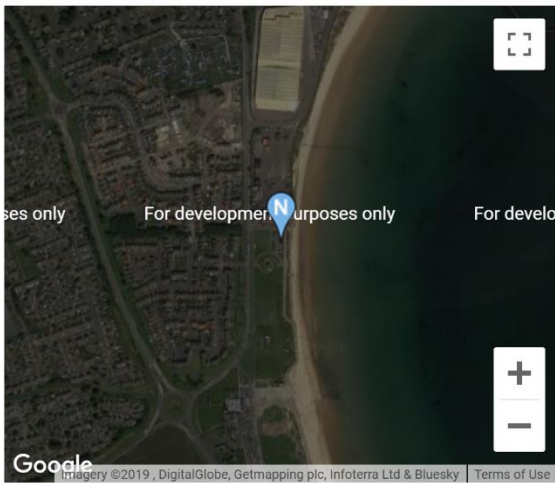


[Back to top](#)

ASHINGTON LAKE



Blyth



Description

A slightly curved sandy bay, can get good waves, slight wind shadow off the harbour and high dunes/ground tends to make the wind gustier than other places. Good access at the north end car parks, wave sailing/flat water blasting.

Seaton sluice end good parking but harder access. Can have off shore flat water blasting, but there are much better places to sail.

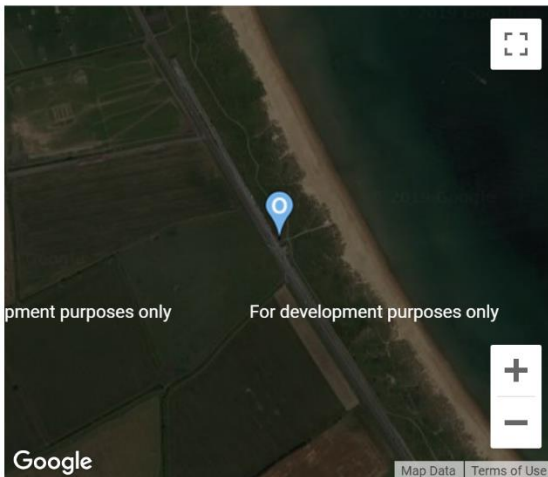
Best Wind Directions

EASY MODERATE HARD



Back to top

Seaton Sluice



Description

Good parking but harder access through dunes. Wave sailing can be good at times, flat water blasting. strong currents. Close to town but there are better places.

Best Wind Directions

EASY MODERATE HARD



[Back to top](#)

Derwent



Allonby



Workington



Gatehouse of Fleet



Derwent



Description

The sailing club is located in the middle of the reservoir which sits almost 1000 feet above sea level. on westerly or easterly winds they are funnelled by the west to east running valley. A stunning setting with good facilities, good parking and access, hot showers and changing rooms, a clubhouse serving hot food and drink.

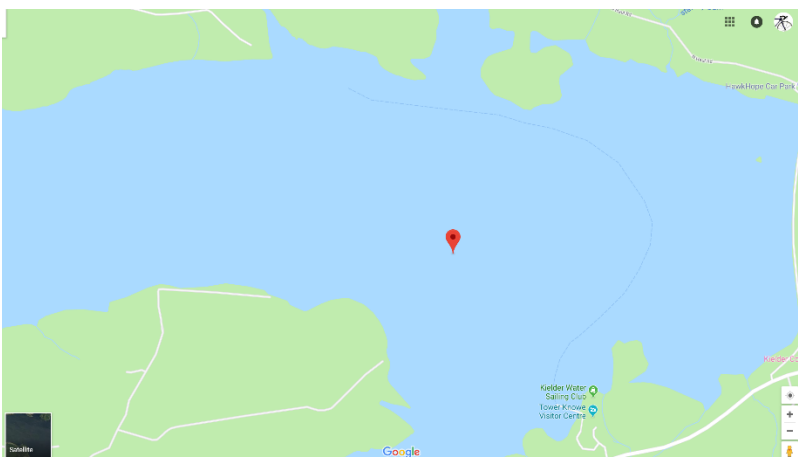
Sailing is flat water blasting but on high wind days a sizeable chop becomes a small swell running down the lake. The best sailing is normally on a WSW directions as they give medium strong wind sailing. on light wind days there are a lot of sailing boats out as well. £15.00 for a day ticket on limited days or a fee payable which allows sailing on a buddy system at any time. In the summer sometimes the only place to have medium/strong wind. good blasting with a sheltered full power flat water gybing bay, can have very satisfying blasting. Good real ale in the clubhouse for after session pint.

Best Wind Directions

EASY MODERATE HARD



KIELDER RESERVOIR



Allonby ▼



Description

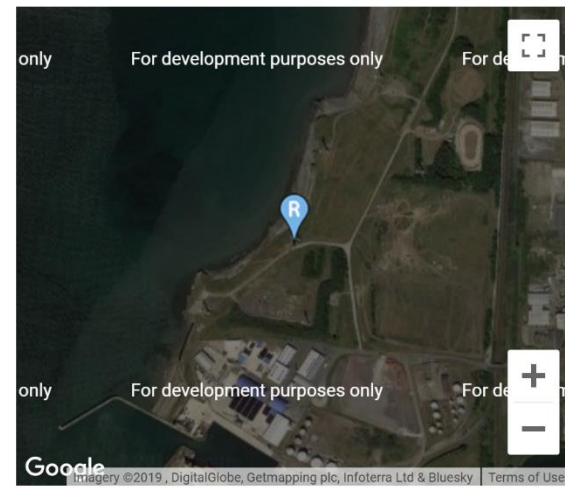
A huge curved bay with a stony high tide shelf and sandy flat beach with odd rocks, marginal SW winds can funnel up the Solway Firth to give short board sailing here due to the funnelling effect of the Cumbrian Lakeland hills and the southern Scottish highlands.

Huge tides on the west coast so at low tide a long walk can be expected, and rough waters at very high tides. On low to mid tides some nice cross onshore clean soft waves can be found with big flat sections in strong winds, Cross onshore flat water blasting and wave sailing can be had. good access, sailing from just south of Allonby on a S-SW or a mile further south at cross Cannonby if more SW-W. Very good quality sailing at times, can get very strong winds.



[Back to top](#)

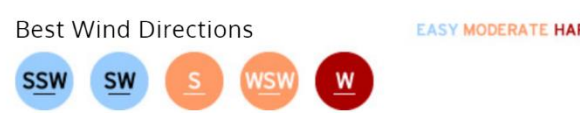
Workington ▼



Description

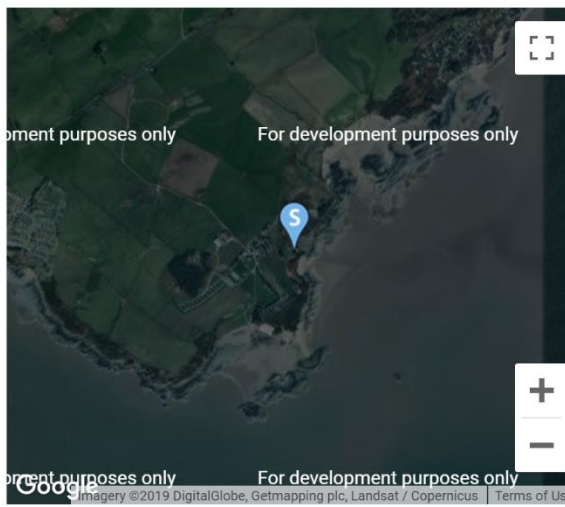
Beach just north of the harbour and a point of land to the south. Very good on SSW-SW winds, when it does work it is a great wave sailing beach. Best from four hours either side of low tide, at high tide there are knarly rocks and big shelf (kit wrecking stuff).

You can have strong winds here, but if SSW-SW and waves wrap in cross shore into the bay. There are a few reefs in the bay, rocks to the north and south of the bay. Access is ok, parking on top of the cliff, a hard carry down and back up but the sailing is worth the hard work, no pain no gain.



[Back to top](#)

Gatehouse of Fleet ▼



Description

A sandy estuary with rocky outcrops around the edges and sandy beaches to launch from. Three launch points, Mossyard campsite, Sandgreen and Cardoness.

The bay is sailable for three hours either side of high tide (spring highs and strong winds will increase this time, more water pushed into the bay) the sailing can have easy big swell in the middle and flat sections around the bay on more onshore directions, flat water/chop on offshore directions. SE,S,SW gets swell, N,NE gives flat water. A great place in a picturesque postcard setting, many places to stay and eat and drink! Richie sails here regularly and reports sailing on 4.0m to 5.7m, when not much wind elsewhere. Again local effects sometimes make the wind stronger on certain directions than elsewhere Dundrennan is the nearest weather station on XC and should be reasonably similar to the wind at gatehouse.

